



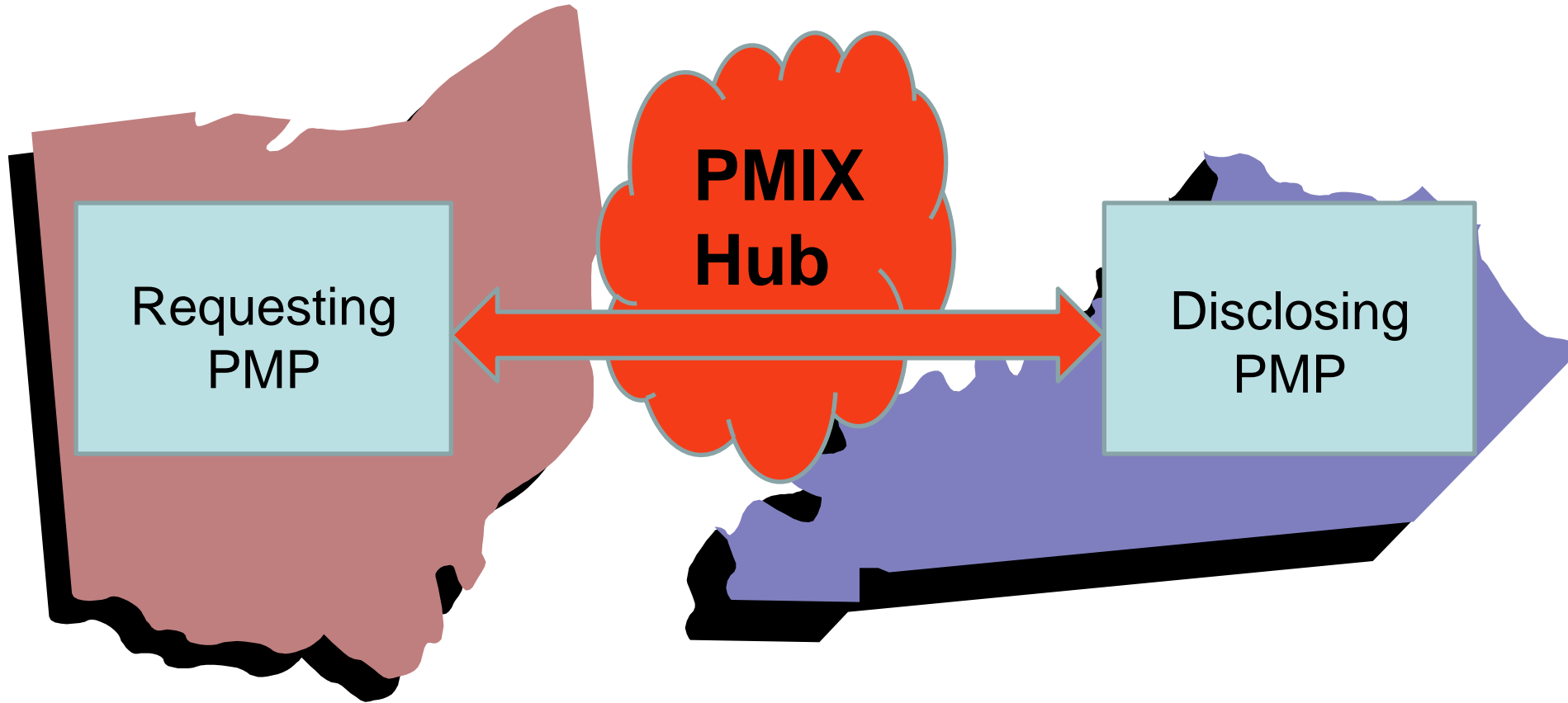
Status Update: PMIX Service Specification and Hub

Rogers National PDMP Meeting
June 7, 2011, Washington, DC
Scott Serich

PMIX Goals

- Secure, reliable, sustainable interstate exchange for every combination of requesting and disclosing states
 - 50x50 national “architecture”
(interoperability infrastructure)
- JRA (SOA) conformance requirement
 - “Thin-layer” (sourcecode-free) solution

PMIX Pilot

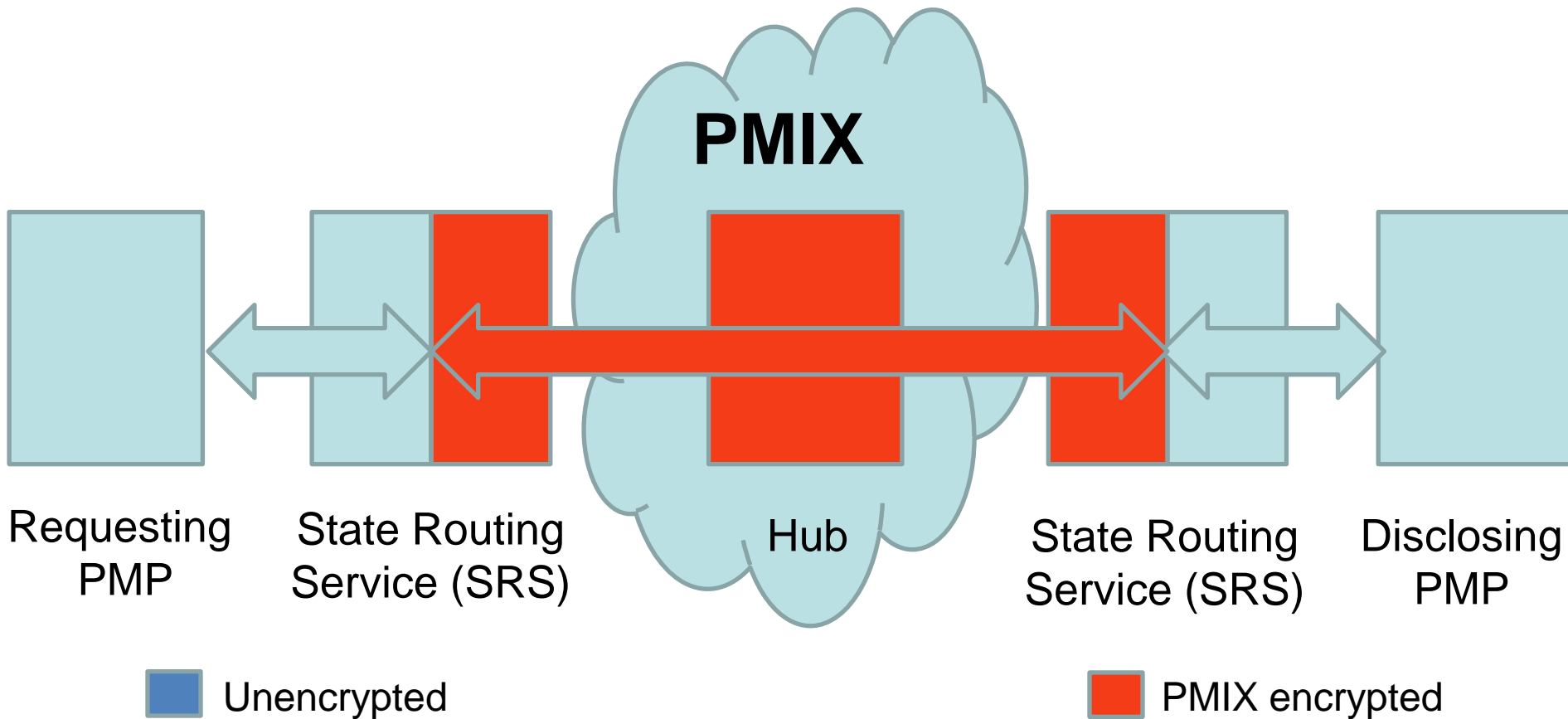


OTech
walkthrough
11/24

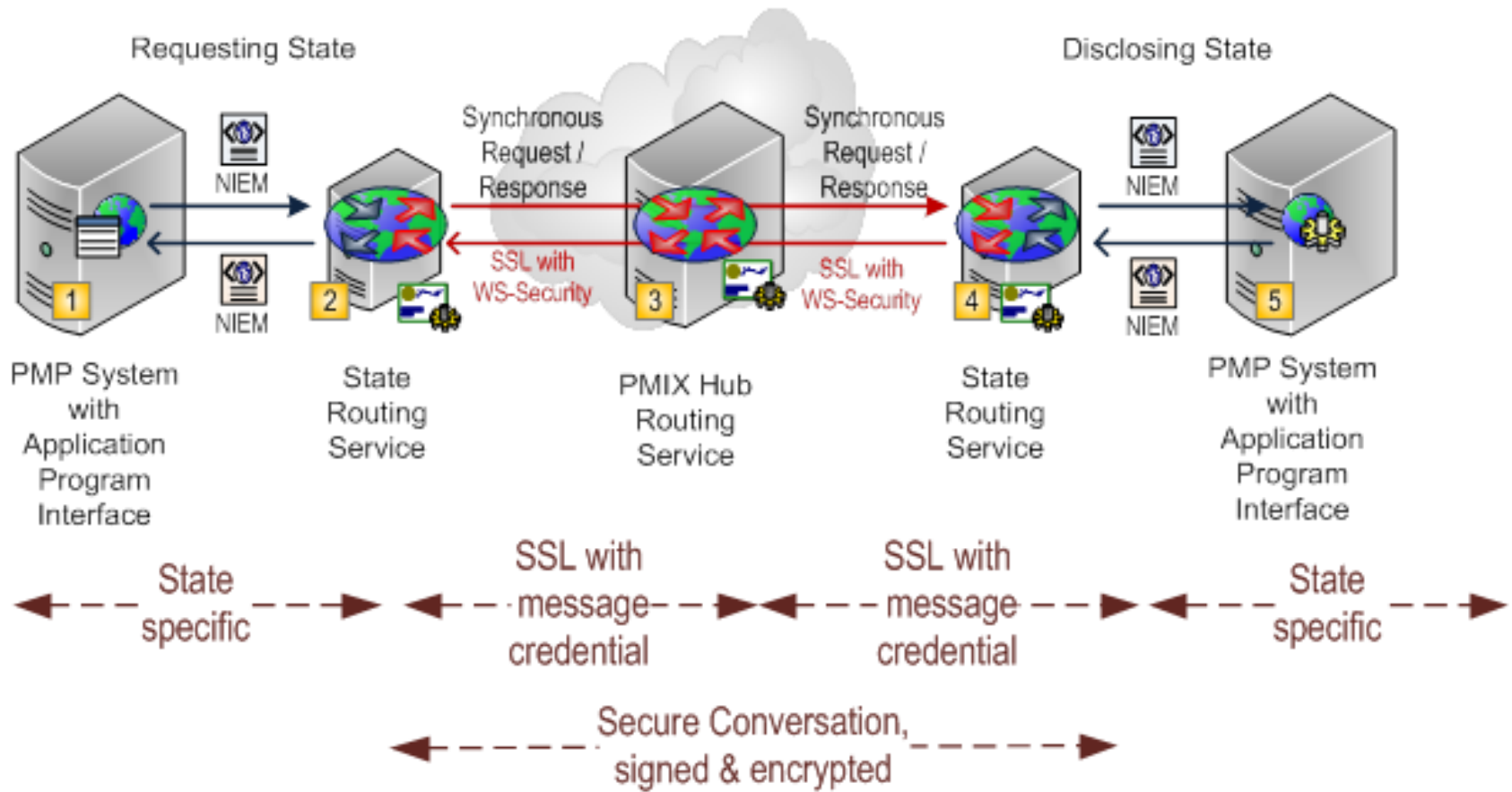
Hub went active
11/23/2010

KY walkthrough
11/29 & 12/29

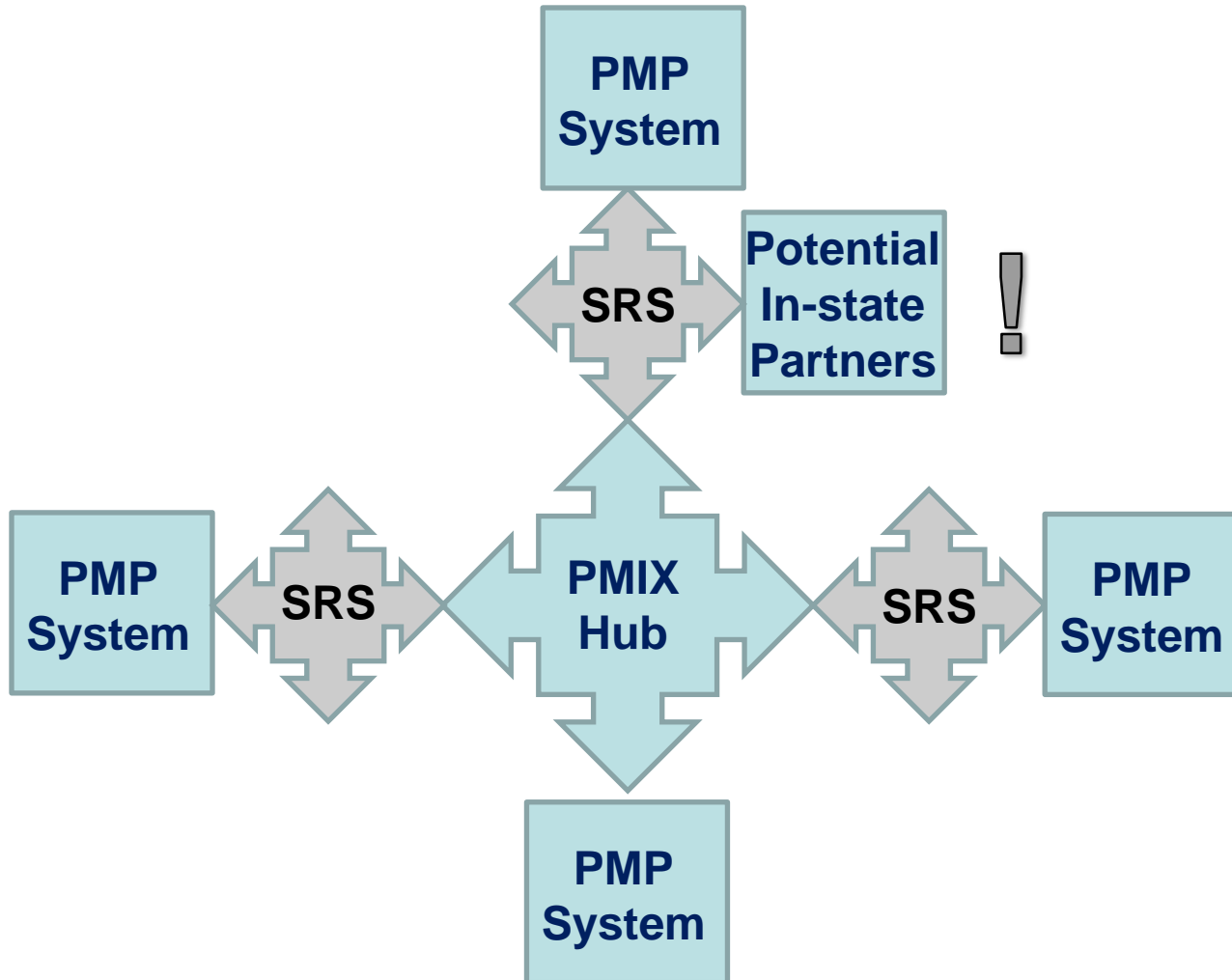
PMIX Security Architecture



5-Box Diagram w/Security



PMIX SRS Concept

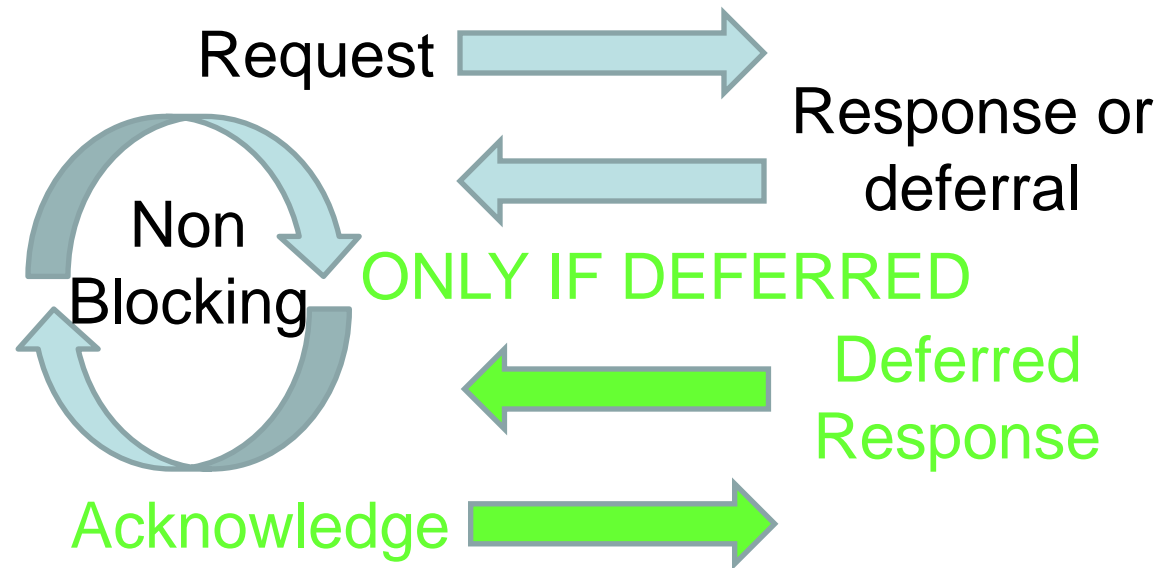


State Routing Service (SRS)

- Optional component
- Simplifies exchanges with PMIX Hub
- Serves as a foundation for a State PMP “Hub”
- Interoperability capability “off the shelf”
- Extensible standards based security and access
- Potential point for value added capabilities such as response collation or statistics
- Separates network administration and security from PMP operations

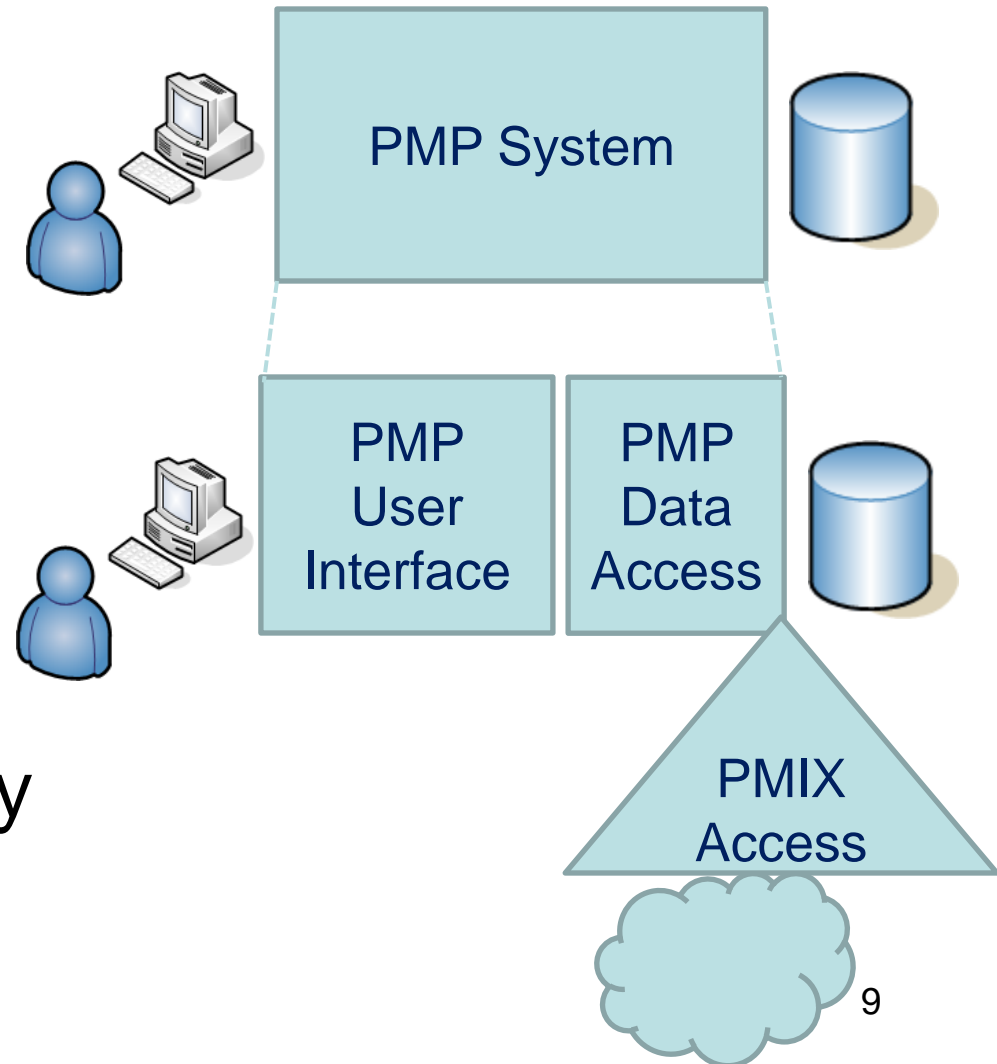
Simple Business Service

- Direct business exchange
 - Deferred response only as needed
- Simple synchronous request/response
- Multithreaded, non-blocking



State Implementation Challenges

- “Splitting” the PMP application into separate User Interface and Data Access for PMIX access
- Understanding XML and web service technology
- Understanding security technology



Resources for States

- Service Specification Package including WSDL & NIEM IEPD
- SRS (optional MS server component)
- Reference implementation (no ICD)
- Security support & PMIX certificate
- Onboarding “mini-TA’s” available to states
 - First-ready-first-served
 - Send request to ASPMP

Potential Next Steps for Hub

- Statistics via basic system log
 - Potential for more advanced features
- Deferred response dynamics defined via SLA
- System health status using standards-based approach

Answers to some FAQs

- No Hub or SRS source code to maintain
- Both the PMIX Hub and the SRS can (and should) be implemented (not “either-or”)
- Heavy use of standards prevent lock-in to a proprietary solution
 - Even the Microsoft components are heavily based on open standards
- A Hub hacker would have a more difficult time accessing PHI
- PMIX GRA Service Spec and Hub are alive and well



Questions?

Scott Serich, IJIS Institute

scott.serich@ijis.org

(703) 726-1913

serich1@verizon.net

Bob Slaski, Open Networks

slaski.bob@gmail.com

(571) 241-2114